

THE CORPORATION
OF
THE TOWNSHIP OF
THE ARCHIPELAGO
9 James Street
Parry Sound, ON
P2A 1T4
705-746-4243

ZONING BY-LAW A2000-07
SCHEDULE A (North)
-- SHEET EXTRACT --

LEGEND

Zone Symbology

- NS, NSC
- Zone Specific - See Map for Zoning Label
- CR - Coastal Residential
- IR - Inland Lakes Residential
- GR - General Residential
- PBR - Pointe au Baril Residential
- EU - Existing Use
- PC - Private Club
- CF - Community Facility
- PQ - Pit & Quarry
- WD - Waste Disposal
- /D - Divided (Indicative of a lot division)
- /H - Holding (Indicative of a holding provision)
- # - Special Provision Zoning

Commercial Zoning

- CC - Contractor Commercial
- MC - Marina Commercial
- MRC - Marina/Resort Commercial
- RC - Resort Commercial
- EC - General Employment Commercial
- PBC - Pointe au Baril Commercial

- EP - Environmental Protection
- EP-1 - Environmental Protection One
- Deer Wintering Overlay (Stratum 1)

Other Objects

- Water
- Road
- Railway
- Island Number Reference
- Zoning Label Reference

0 500 1,000
Meters



MAP INDEX
North



Schedule '2' to BY-LAW No. A2224-26
READ and FINALLY PASSED in OPEN COUNCIL
This 22nd day of May, 2026.

Bert Liverance
Bert Liverance, Reeve

Maryann Martin
Maryann Martin, Clerk



THE CORPORATION
OF
THE TOWNSHIP OF
THE ARCHIPELAGO
9 James Street
Parry Sound, ON
P2A 1T4
705-746-4243

ZONING BY-LAW A2000-07
SCHEDULE A (North)
-- SHEET EXTRACT --

LEGEND

Zone Symbology

- NS, NSC
- Zone Specific - See Map for Zoning Label
- CR - Coastal Residential
- IR - Inland Lakes Residential
- GR - General Residential
- PBR - Pointe au Baril Residential
- EU - Existing Use
- PC - Private Club
- CF - Community Facility
- PQ - Pit & Quarry
- WD - Waste Disposal
- /D - Divided (Indicative of a lot division)
- /H - Holding (Indicative of a holding provision)
- # - Special Provision Zoning

Commercial Zoning

- CC - Contractor Commercial
- MC - Marina Commercial
- MRC - Marina/Resort Commercial
- RC - Resort Commercial
- EC - General Employment Commercial
- PBC - Pointe au Baril Commercial

- EP - Environmental Protection
- EP-1 - Environmental Protection One
- Deer Wintering Overlay (Stratum 1)

Other Objects

- Water
- Road
- Railway
- Island Number Reference
- Zoning Label Reference

0 500 1,000
Meters

MAP INDEX
North

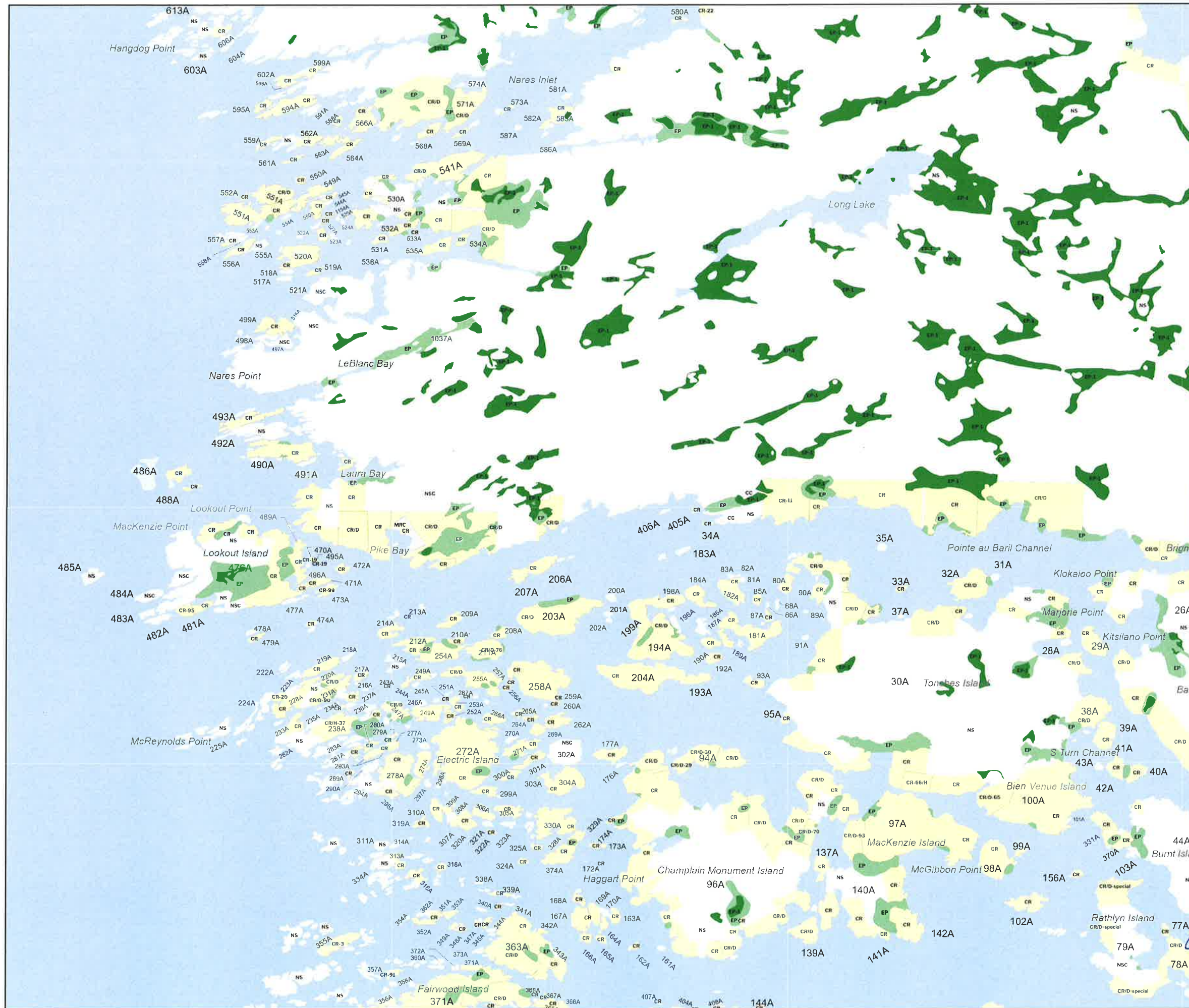


Schedule '2' to BY-LAW No. A2224-26
READ and FINALLY PASSED in OPEN COUNCIL
This 22nd day of May, 2026.

Bert Liverance, Reeve

Maryann Martin, Clerk

SHEET: **N-2**





THE CORPORATION
OF
THE TOWNSHIP OF
THE ARCHIPELAGO
9 James Street
Parry Sound, ON
P2A 1T4
705-746-4243

ZONING BY-LAW A2000-07
SCHEDULE A (North)
-- SHEET EXTRACT --

LEGEND

Zone Symbology

- NS, NSC
- Zone Specific - See Map for Zoning Label
- CR - Coastal Residential
- IR - Inland Lakes Residential
- GR - General Residential
- PBR - Pointe au Baril Residential
- EU - Existing Use
- PC - Private Club
- CF - Community Facility
- PQ - Pit & Quarry
- WD - Waste Disposal
- /D - Divided (Indicative of a lot division)
- /H - Holding (Indicative of a holding provision)
- # - Special Provision Zoning

Commercial Zoning

- CC - Contractor Commercial
- MC - Marina Commercial
- MRC - Marina/Resort Commercial
- RC - Resort Commercial
- EC - General Employment Commercial
- PBC - Pointe au Baril Commercial

- EP - Environmental Protection
- EP-1 - Environmental Protection One
- Deer Wintering Overlay (Stratum 1)

Other Objects

- Water
- Road
- Railway
- Island Number Reference
- Zoning Label Reference

0 500 1,000
Meters



MAP INDEX
North

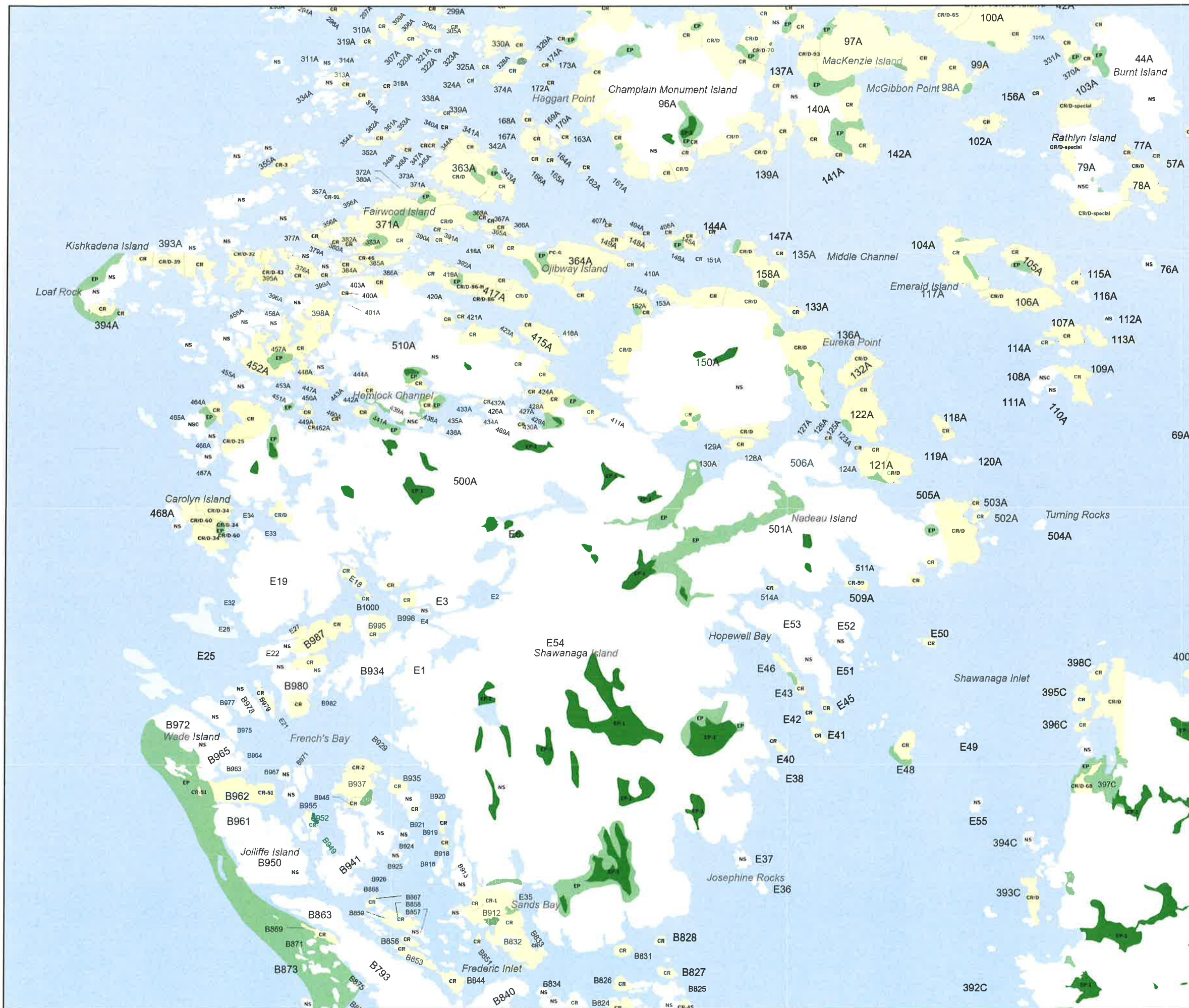


Schedule '2' to BY-LAW No. A2224-26
READ and FINALLY PASSED in OPEN COUNCIL
This 22nd day of May, 2026.

Bert Liverance, Reeve

Maryann Martin, Clerk

SHEET: N-3





THE CORPORATION
OF
THE TOWNSHIP OF
THE ARCHIPELAGO
9 James Street
Parry Sound, ON
P2A 1T4
705-746-4243

ZONING BY-LAW A2000-07
SCHEDULE A (North)
-- SHEET EXTRACT --

LEGEND

Zone Symbology

- NS, NSC
- Zone Specific - See Map for Zoning Label
- CR - Coastal Residential
- IR - Inland Lakes Residential
- GR - General Residential
- PBR - Pointe au Baril Residential
- EU - Existing Use
- PC - Private Club
- CF - Community Facility
- PQ - Pit & Quarry
- WD - Waste Disposal
- /D - Divided (Indicative of a lot division)
- /H - Holding (Indicative of a holding provision)
- # - Special Provision Zoning

Commercial Zoning

- CC - Contractor Commercial
- MC - Marina Commercial
- MRC - Marina/Resort Commercial
- RC - Resort Commercial
- EC - General Employment Commercial
- PBC - Pointe au Baril Commercial

- EP - Environmental Protection
- EP-1 - Environmental Protection One
- Deer Wintering Overlay (Stratum 1)

Other Objects

- Water
- Road
- Railway
- Island Number Reference
- Zoning Label Reference

0 500 1,000
Meters



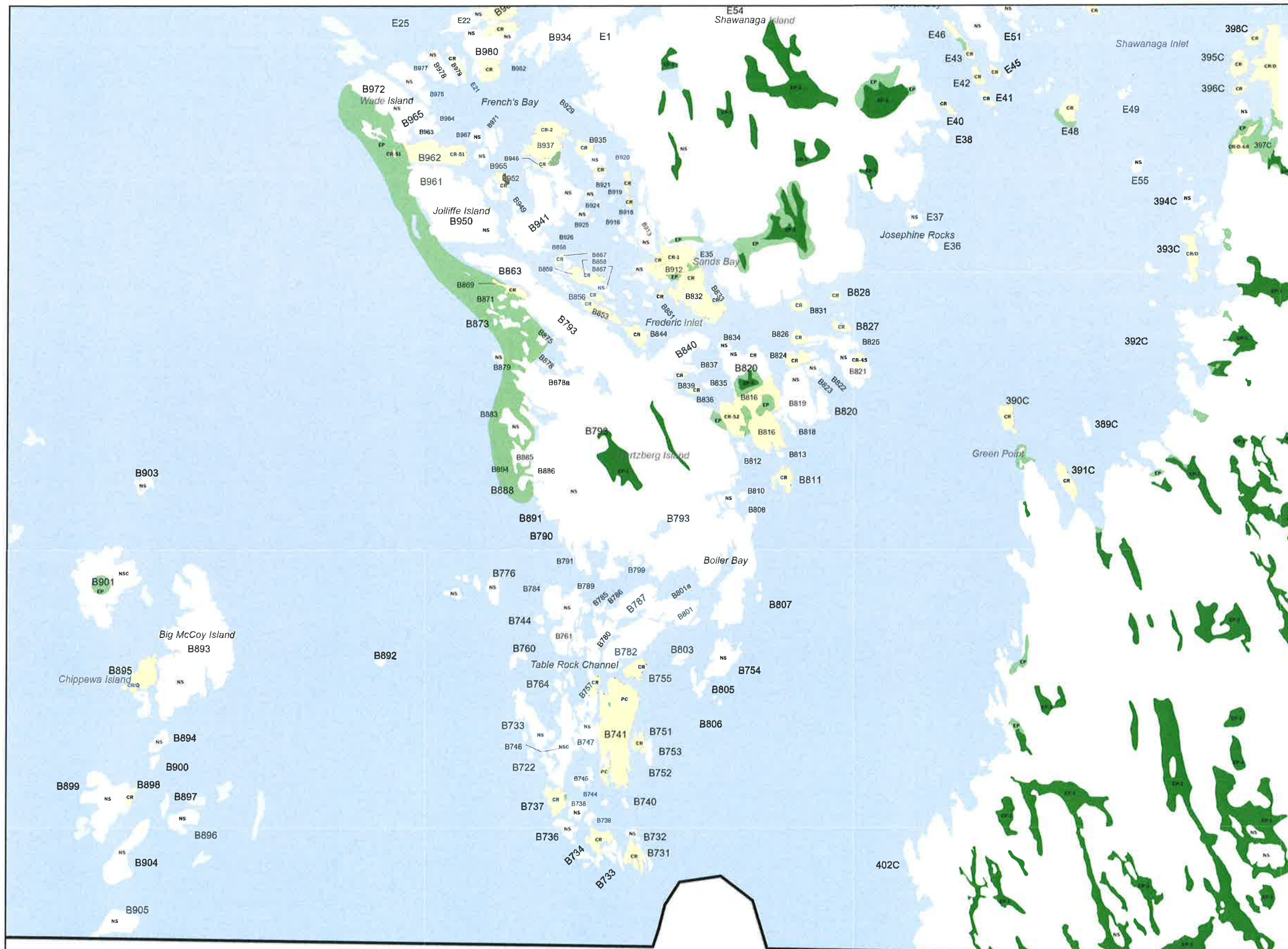
MAP INDEX
North



Schedule '2' to BY-LAW No. A2224-26
READ and FINALLY PASSED in OPEN COUNCIL
This 22nd day of May, 2026.

Bert Liverance, Reeve

Maryann Martin, Clerk





THE CORPORATION OF
THE TOWNSHIP OF
THE ARCHIPELAGO
9 James Street
Parry Sound, ON
P2A 1T4
705-746-4243

ZONING BY-LAW A2000-07
SCHEDULE A (North)
-- SHEET EXTRACT --

LEGEND

Zone Symbology

- NS, NSC
- Zone Specific - See Map for Zoning Label
- CR - Coastal Residential
- IR - Inland Lakes Residential
- GR - General Residential
- PBR - Pointe au Baril Residential
- EU - Existing Use
- PC - Private Club
- CF - Community Facility
- PQ - Pit & Quarry
- WD - Waste Disposal
- /D - Divided (Indicative of a lot division)
- /H - Holding (Indicative of a holding provision)
- # - Special Provision Zoning
- Commercial Zoning
- CC - Contractor Commercial
- MC - Marina Commercial
- MRC - Marina/Resort Commercial
- RC - Resort Commercial
- EC - General Employment Commercial
- PBC - Pointe au Baril Commercial

- EP - Environmental Protection
- EP-1 - Environmental Protection One
- Deer Wintering Overlay (Stratum 1)

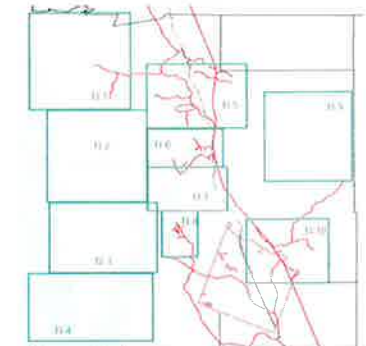
Other Objects

- Water
- Road
- Railway
- Island Number Reference
- Zoning Label Reference

0 500 1,000
Meters



MAP INDEX
North

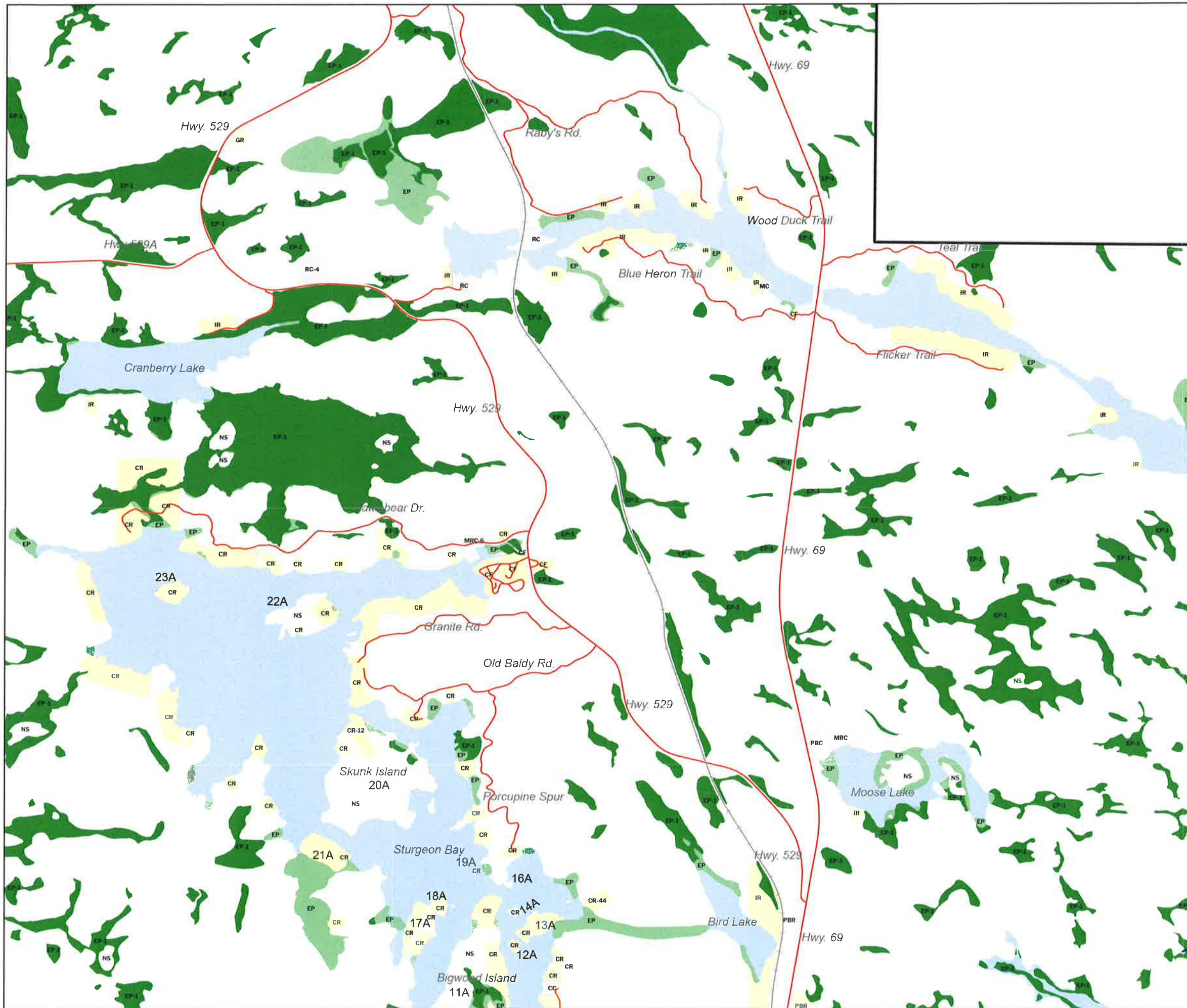


Schedule '2' to BY-LAW No. A2224-26
READ and FINALLY PASSED in OPEN COUNCIL
This 22nd day of May, 2026.

Bert Liverance
Bert Liverance, Reeve

Maryann Martin
Maryann Martin, Clerk

SHEET: N-5





THE CORPORATION
OF
THE TOWNSHIP OF
THE ARCHIPELAGO
9 James Street
Parry Sound, ON
P2A 1T4
705-746-4243

ZONING BY-LAW A2000-07
SCHEDULE A (North)
-- SHEET EXTRACT --

LEGEND

Zone Symbology

- NS, NSC
- Zone Specific - See Map for Zoning Label
- CR - Coastal Residential
- IR - Inland Lakes Residential
- GR - General Residential
- PBR - Pointe au Baril Residential
- EU - Existing Use
- PC - Private Club
- CF - Community Facility
- PQ - Pit & Quarry
- WD - Waste Disposal
- /D - Divided (Indicative of a lot division)
- /H - Holding (Indicative of a holding provision)
- # - Special Provision Zoning

Commercial Zoning

- CC - Contractor Commercial
- MC - Marina Commercial
- MRC - Marina/Resort Commercial
- RC - Resort Commercial
- EC - General Employment Commercial
- PBC - Pointe au Baril Commercial

- EP - Environmental Protection
- EP-1 - Environmental Protection One
- Deer Wintering Overlay (Stratum 1)

Other Objects

- Water
- Road
- Railway
- Island Number Reference
- Zoning Label Reference



MAP INDEX
North



Schedule '2' to BY-LAW No. A2224-26
READ and FINALLY PASSED in OPEN COUNCIL
This 22nd day of May, 2026.

Bert Liverance
Bert Liverance, Reeve

Maryann Martin
Maryann Martin, Clerk

SHEET: N-6





THE CORPORATION
OF
THE TOWNSHIP OF
THE ARCHIPELAGO
9 James Street
Parry Sound, ON
P2A 1T4
705-746-4243

ZONING BY-LAW A2000-07
SCHEDULE A (North)
-- SHEET EXTRACT --

LEGEND

Zone Symbology

- NS, NSC
- Zone Specific - See Map for Zoning Label
- CR - Coastal Residential
- IR - Inland Lakes Residential
- GR - General Residential
- PBR - Pointe au Baril Residential
- EU - Existing Use
- PC - Private Club
- CF - Community Facility
- PQ - Pit & Quarry
- WD - Waste Disposal
- /D - Divided (Indicative of a lot division)
- /H - Holding (Indicative of a holding provision)
- # - Special Provision Zoning

Commercial Zoning

- CC - Contractor Commercial
- MC - Marina Commercial
- MRC - Marina/Resort Commercial
- RC - Resort Commercial
- EC - General Employment Commercial
- PBC - Pointe au Baril Commercial

- EP - Environmental Protection
- EP-1 - Environmental Protection One
- Deer Wintering Overlay (Stratum 1)

Other Objects

- Water
- Road
- Railway
- Island Number Reference
- Zoning Label Reference



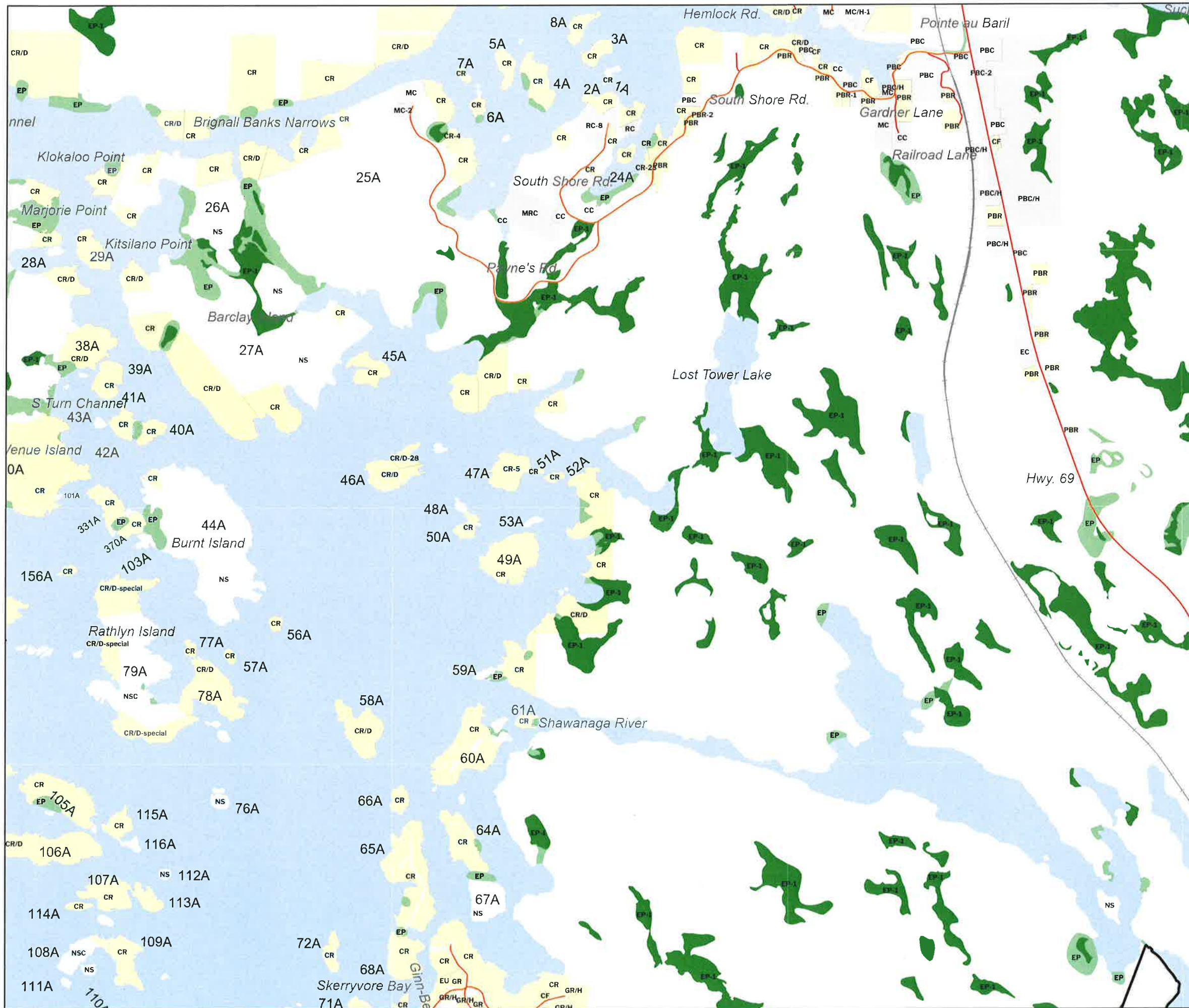
MAP INDEX
North

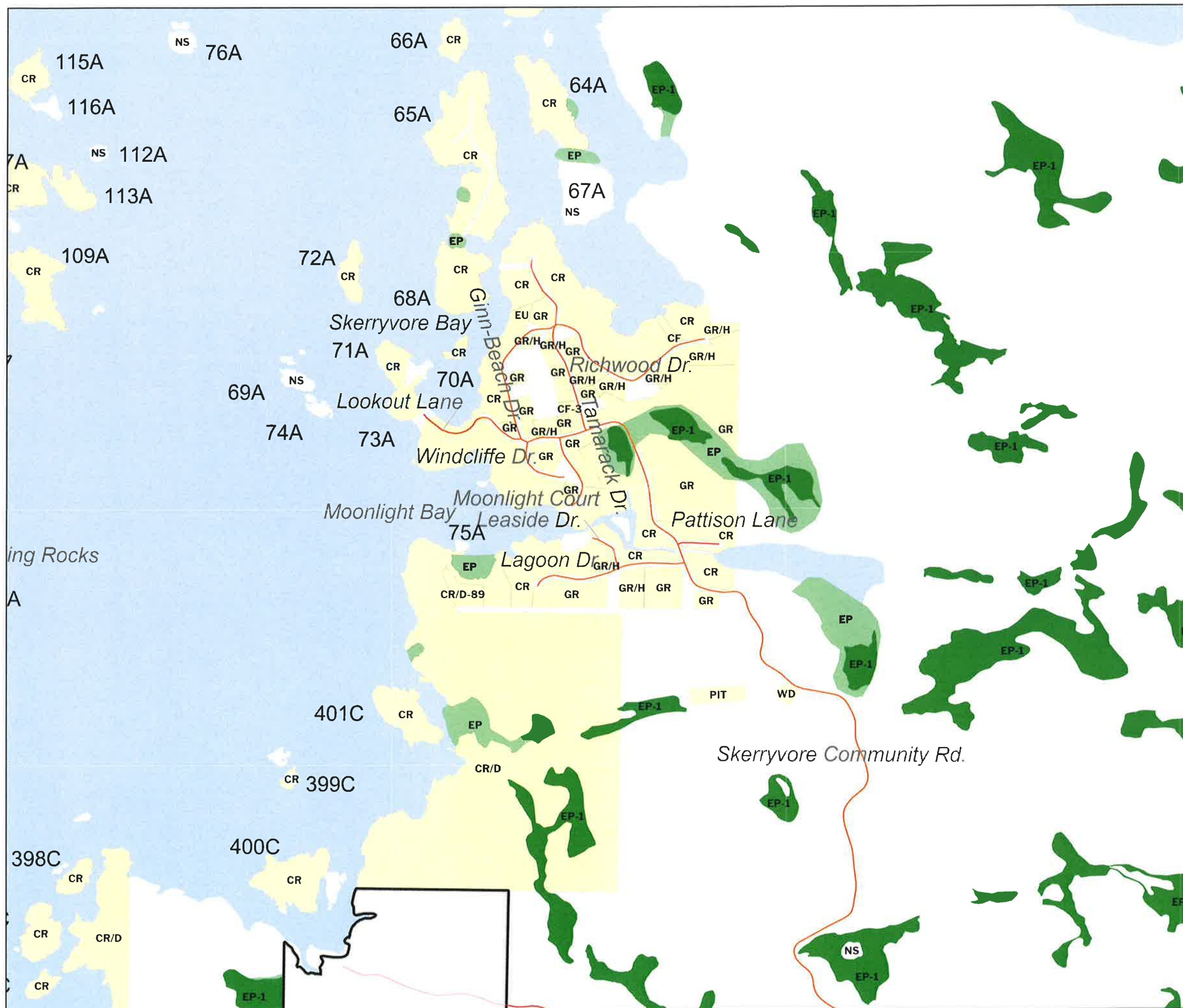


Schedule '2' to BY-LAW No. A2224-26
READ and FINALLY PASSED in OPEN COUNCIL
This 22nd day of May, 2026.

Bert Liverance
Bert Liverance, Reeve

Maryann Martin
Maryann Martin, Clerk





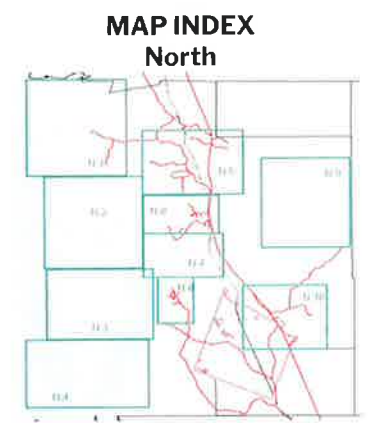
THE CORPORATION
OF
THE TOWNSHIP OF
THE ARCHIPELAGO
9 James Street
Parry Sound, ON
P2A 1T4
705-746-4243

ZONING BY-LAW A2000-07
SCHEDULE A (North)
-- SHEET EXTRACT --

LEGEND

- Zone Symbology**
- NS, NSC
 - Zone Specific - See Map for Zoning Label
 - CR - Coastal Residential
 - IR - Inland Lakes Residential
 - GR - General Residential
 - PBR - Pointe au Baril Residential
 - EU - Existing Use
 - PC - Private Club
 - CF - Community Facility
 - PQ - Pit & Quarry
 - WD - Waste Disposal
 - /D - Divided (Indicative of a lot division)
 - /H - Holding (Indicative of a holding provision)
 - # - Special Provision Zoning
- Commercial Zoning**
- CC - Contractor Commercial
 - MC - Marina Commercial
 - MRC - Marina/Resort Commercial
 - RC - Resort Commercial
 - EC - General Employment Commercial
 - PBC - Pointe au Baril Commercial
- Environmental Protection**
- EP - Environmental Protection
 - EP-1 - Environmental Protection One
- Deer Wintering Overlay (Stratum 1)**

- Other Objects**
- Water
 - Road
 - Railway
 - Island Number Reference
 - Zoning Label Reference
- 0 500 1,000 Meters



Schedule '2' to BY-LAW No. A2224-26
READ and FINALLY PASSED in OPEN COUNCIL
This 22nd day of May, 2026.

[Signature]
Bert Liverance, Reeve

[Signature]
Maryann Martin, Clerk



THE CORPORATION
OF
THE TOWNSHIP OF
THE ARCHIPELAGO
9 James Street
Parry Sound, ON
P2A 1T4
705-746-4243

ZONING BY-LAW A2000-07
SCHEDULE A (North)
-- SHEET EXTRACT --

LEGEND

Zone Symbolology

- NS, NSC
- Zone Specific - See Map for Zoning Label
- CR - Coastal Residential
- IR - Inland Lakes Residential
- GR - General Residential
- PBR - Pointe au Baril Residential
- EU - Existing Use
- PC - Private Club
- CF - Community Facility
- PQ - Pit & Quarry
- WD - Waste Disposal
- /D - Divided (Indicative of a lot division)
- /H - Holding (Indicative of a holding provision)
- # - Special Provision Zoning
- Commercial Zoning
- CC - Contractor Commercial
- MC - Marina Commercial
- MRC - Marina/Resort Commercial
- RC - Resort Commercial
- EC - General Employment Commercial
- PBC - Pointe au Baril Commercial

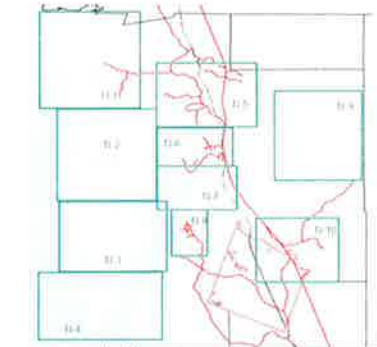
- EP - Environmental Protection
- EP-1 - Environmental Protection One
- Deer Wintering Overlay (Stratum 1)

Other Objects

- Water
- Road
- Railway
- Island Number Reference
- Zoning Label Reference



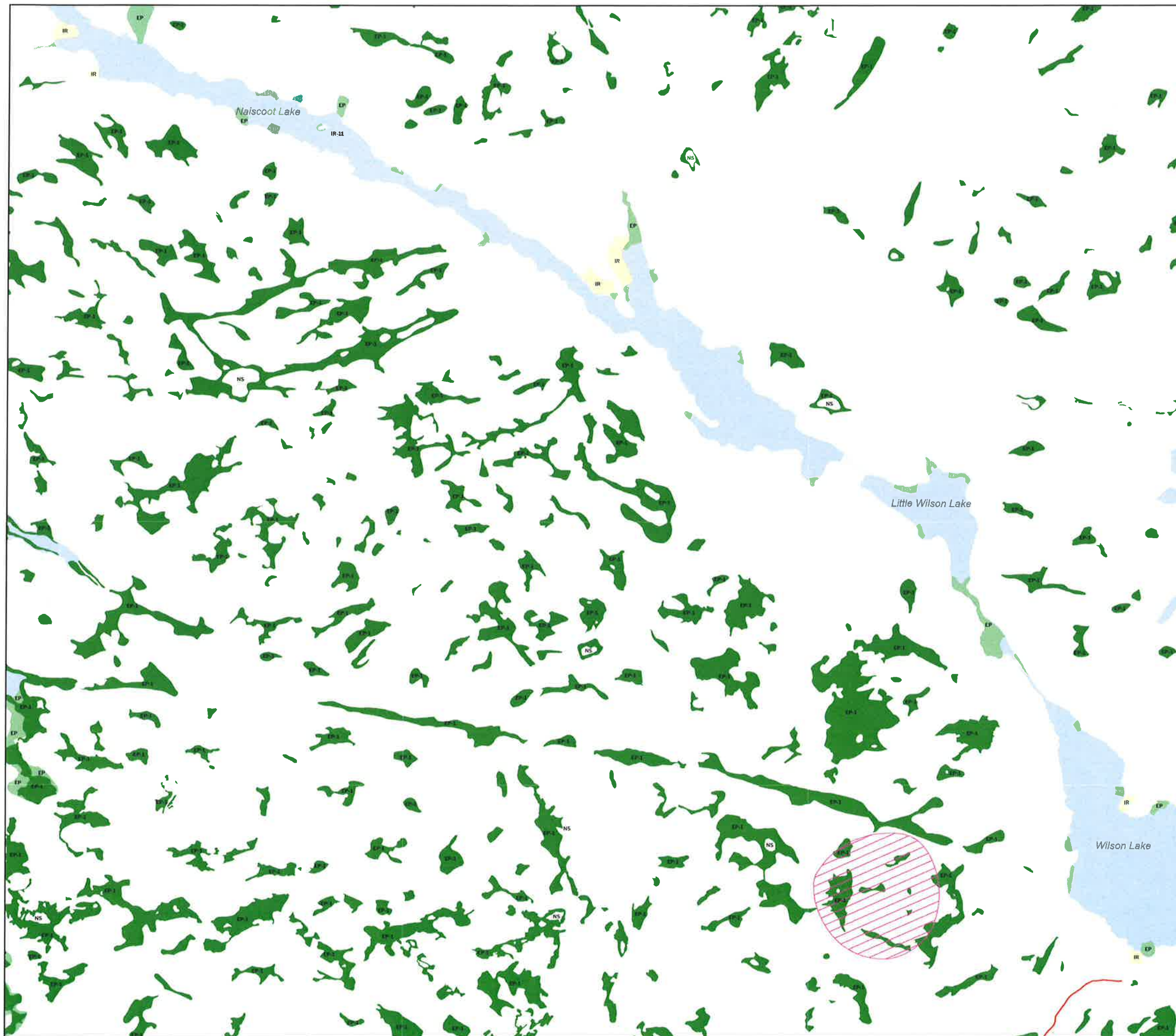
MAP INDEX
North



Schedule '2' to BY-LAW No. A2224-26
READ and FINALLY PASSED in OPEN COUNCIL
This 22nd day of May, 2026.

Bert Liverance
Bert Liverance, Reeve

Maryann Martin
Maryann Martin, Clerk



ZONING BY-LAW A2000-07
SCHEDULE A (North)
-- SHEET EXTRACT --

LEGEND

Zone Symbology

- NS, NSC
- Zone Specific - See Map for Zoning Label
- CR - Coastal Residential
- IR - Inland Lakes Residential
- GR - General Residential
- PBR - Pointe au Baril Residential
- EU - Existing Use
- PC - Private Club
- CF - Community Facility
- PQ - Pit & Quarry
- WD - Waste Disposal
- /D - Divided (Indicative of a lot division)
- /H - Holding (Indicative of a holding provision)
- # - Special Provision Zoning

Commercial Zoning

- CC - Contractor Commercial
- MC - Marina Commercial
- MRC - Marina/Resort Commercial
- RC - Resort Commercial
- EC - General Employment Commercial
- PBC - Pointe au Baril Commercial

- EP - Environmental Protection
- EP-1 - Environmental Protection One
- Deer Wintering Overlay (Stratum 1)

Other Objects

- Water
- Road
- Railway
- Island Number Reference
- Zoning Label Reference


0 500 1,000
Meters




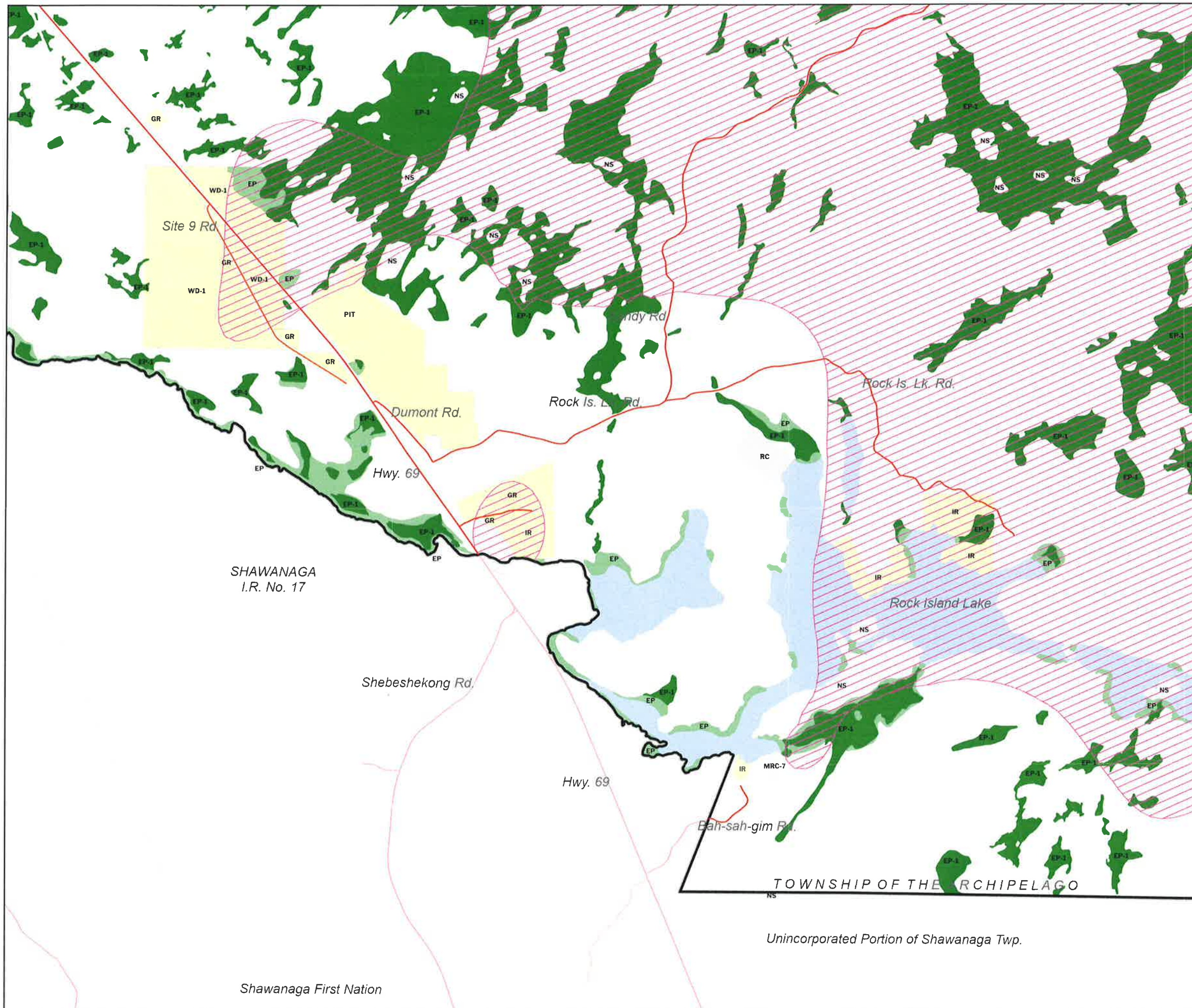
MAP INDEX
North



Schedule '2' to BY-LAW No. A2224-26
READ and FINALLY PASSED in OPEN COUNCIL
This 22nd day of May, 2026.


Bert Liverance, Reeve


Maryann Martin, Clerk





THE CORPORATION
OF
THE TOWNSHIP OF
THE ARCHIPELAGO
9 James Street
Parry Sound, ON
P2A 1T4
705-746-4243

ZONING BY-LAW A2000-07
SCHEDULE A (South)
-- SHEET EXTRACT --

LEGEND

Zone Symbology

- NS, NSC
- Zone Specific - See Map for Zoning Label
- CR - Coastal Residential
- IR - Inland Lakes Residential
- GR - General Residential
- PBR - Pointe au Baril Residential
- EU - Existing Use
- PC - Private Club
- CF - Community Facility
- PQ - Pit & Quarry
- WD - Waste Disposal
- /D - Divided (Indicative of a lot division)
- /H - Holding (Indicative of a holding provision)
- # - Special Provision Zoning

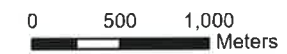
Commercial Zoning

- CC - Contractor Commercial
- MC - Marina Commercial
- MRC - Marina/Resort Commercial
- RC - Resort Commercial
- EC - General Employment Commercial
- PBC - Pointe au Baril Commercial

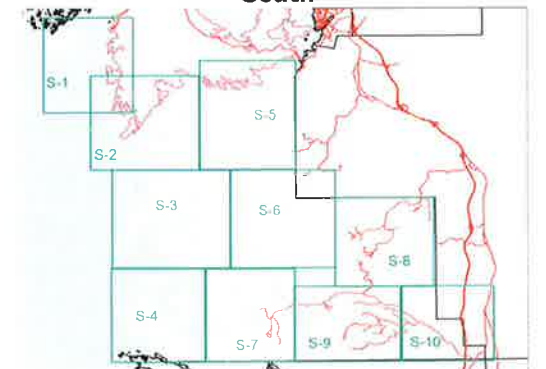
- EP - Environmental Protection
- EP-1 - Environmental Protection One
- Deer Wintering Overlay (Stratum 1)

Other Objects

- Water
- Road
- Railway
- Island Number Reference
- Zoning Label Reference



MAP INDEX
South

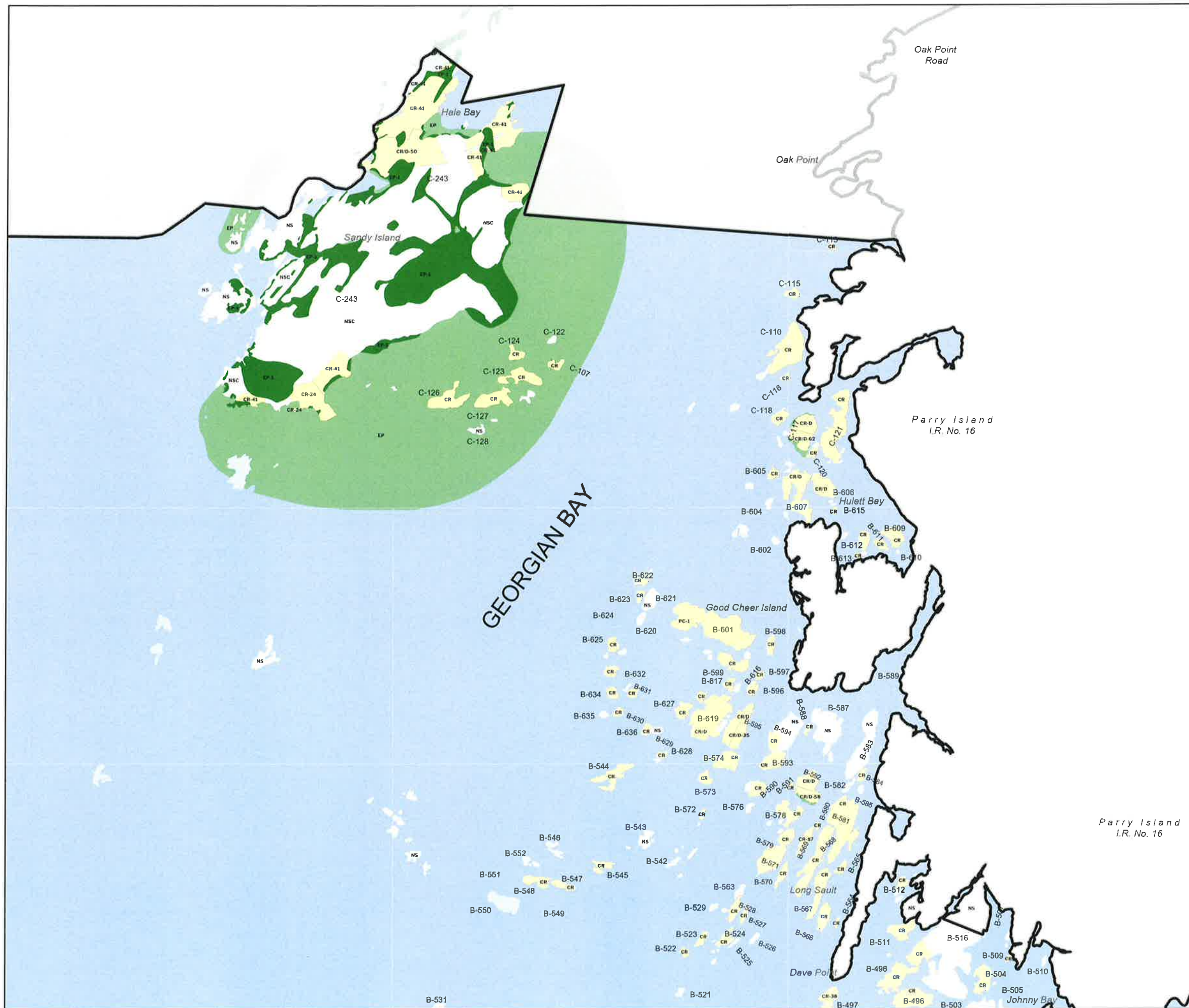


Schedule '2' to BY-LAW No. A2224-26
READ and FINALLY PASSED in OPEN COUNCIL
This 22nd day of May, 2026.

Bert Liverance
Bert Liverance, Reeve

Maryann Martin
Maryann Martin, Clerk

SHEET: S-1





THE CORPORATION
OF
THE TOWNSHIP OF
THE ARCHIPELAGO
9 James Street
Parry Sound, ON
P2A 1T4
705-746-4243

ZONING BY-LAW A2000-07
SCHEDULE A (South)
-- SHEET EXTRACT --

LEGEND

Zone Symbology

- NS, NSC
- Zone Specific - See Map for Zoning Label
- CR - Coastal Residential
- IR - Inland Lakes Residential
- GR - General Residential
- PBR - Pointe au Baril Residential
- EU - Existing Use
- PC - Private Club
- CF - Community Facility
- PQ - Pit & Quarry
- WD - Waste Disposal
- /D - Divided (Indicative of a lot division)
- /H - Holding (Indicative of a holding provision)
- # - Special Provision Zoning

Commercial Zoning

- CC - Contractor Commercial
- MC - Marina Commercial
- MRC - Marina/Resort Commercial
- RC - Resort Commercial
- EC - General Employment Commercial
- PBC - Pointe au Baril Commercial

- EP - Environmental Protection
- EP-1 - Environmental Protection One
- Deer Wintering Overlay (Stratum 1)

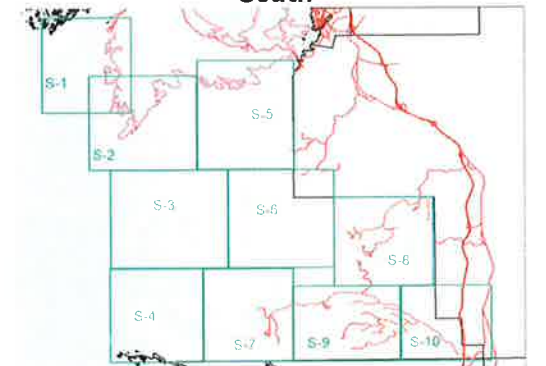
Other Objects

- Water
- Road
- Railway
- Island Number Reference
- Zoning Label Reference

0 500 1,000
Meters



**MAP INDEX
South**

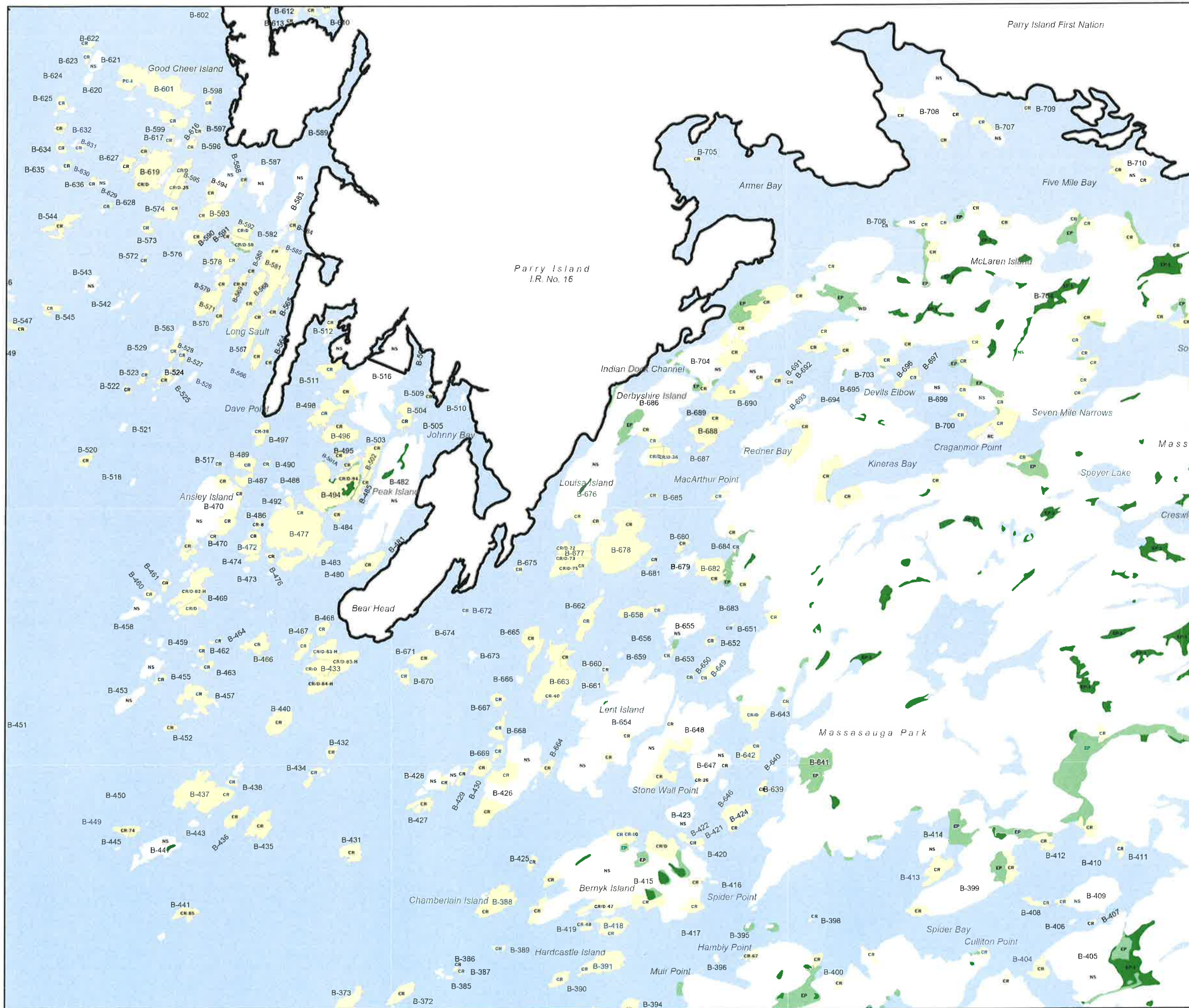


Schedule '2' to BY-LAW No. A2224-26
READ and FINALLY PASSED in OPEN COUNCIL
This 22nd day of May, 2026.

Bert Liverance, Reeve

Maryann Martin, Clerk

SHEET: S-2



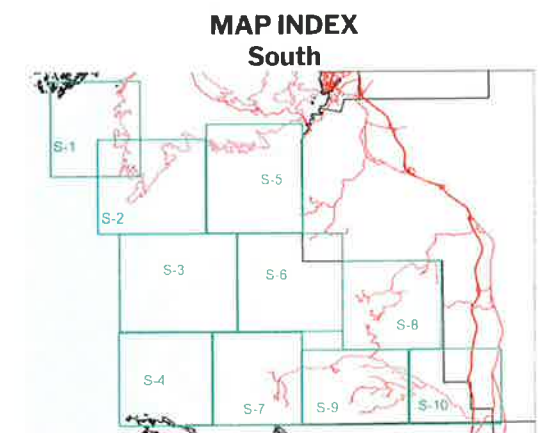


THE CORPORATION
OF
THE TOWNSHIP OF
THE ARCHIPELAGO
9 James Street
Parry Sound, ON
P2A 1T4
705-746-4243

ZONING BY-LAW A2000-07
SCHEDULE A (South)
-- SHEET EXTRACT --

LEGEND

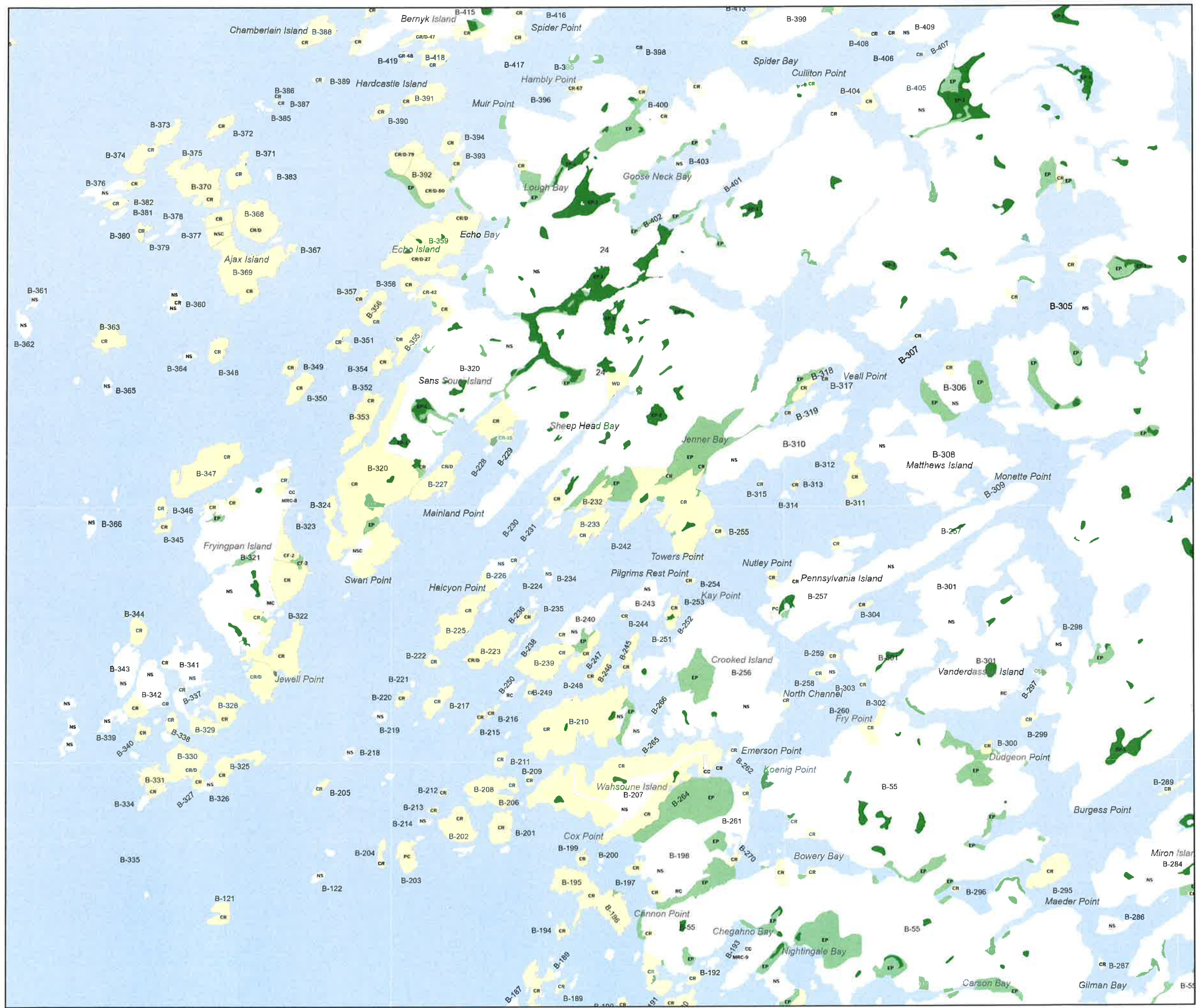
- Zone Symbology**
- NS, NSC
 - Zone Specific - See Map for Zoning Label
 - CR - Coastal Residential
 - IR - Inland Lakes Residential
 - GR - General Residential
 - PBR - Pointe au Baril Residential
 - EU - Existing Use
 - PC - Private Club
 - CF - Community Facility
 - PQ - Pit & Quarry
 - WD - Waste Disposal
 - /D - Divided (Indicative of a lot division)
 - /H - Holding (Indicative of a holding provision)
 - # - Special Provision Zoning
- Commercial Zoning**
- CC - Contractor Commercial
 - MC - Marina Commercial
 - MRC - Marina/Resort Commercial
 - RC - Resort Commercial
 - EC - General Employment Commercial
 - PBC - Pointe au Baril Commercial
- EP - Environmental Protection
 - EP-1 - Environmental Protection One
 - Deer Wintering Overlay (Stratum 1)
- Other Objects**
- Water
 - Road
 - Railway
 - Island Number Reference
 - Zoning Label Reference
- 0 500 1,000 Meters



Schedule '2' to BY-LAW No. A2224-26
READ and FINALLY PASSED in OPEN COUNCIL
This 22nd day of May, 2026.

Bert Liverance, Reeve
Bert Liverance, Reeve

Maryann Martin, Clerk
Maryann Martin, Clerk





THE CORPORATION
OF
THE TOWNSHIP OF
THE ARCHIPELAGO
9 James Street
Parry Sound, ON
P2A 1T4
705-746-4243

GEORGIAN BAY

ZONING BY-LAW A2000-07 SCHEDULE A (South) -- SHEET EXTRACT --

LEGEND

Zone Symbology

- NS, NSC
- Zone Specific - See Map for Zoning Label
- CR - Coastal Residential
- IR - Inland Lakes Residential
- GR - General Residential
- PBR - Pointe au Baril Residential
- EU - Existing Use
- PC - Private Club
- CF - Community Facility
- PQ - Pit & Quarry
- WD - Waste Disposal
- /D - Divided (Indicative of a lot division)
- /H - Holding (Indicative of a holding provision)
- # - Special Provision Zoning

Commercial Zoning

- CC - Contractor Commercial
- MC - Marina Commercial
- MRC - Marina/Resort Commercial
- RC - Resort Commercial
- EC - General Employment Commercial
- PBC - Pointe au Baril Commercial

- EP - Environmental Protection
- EP-1 - Environmental Protection One
- Deer Wintering Overlay (Stratum 1)

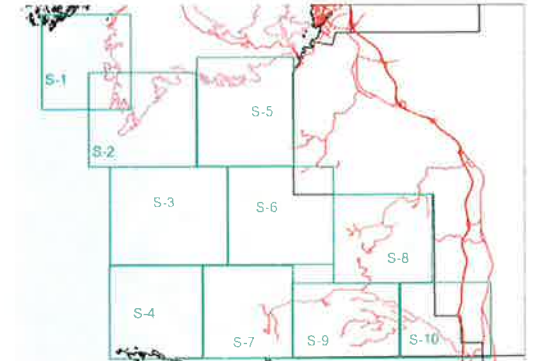
Other Objects

- Water
- Road
- Railway
- Island Number Reference
- Zoning Label Reference

0 500 1,000
Meters



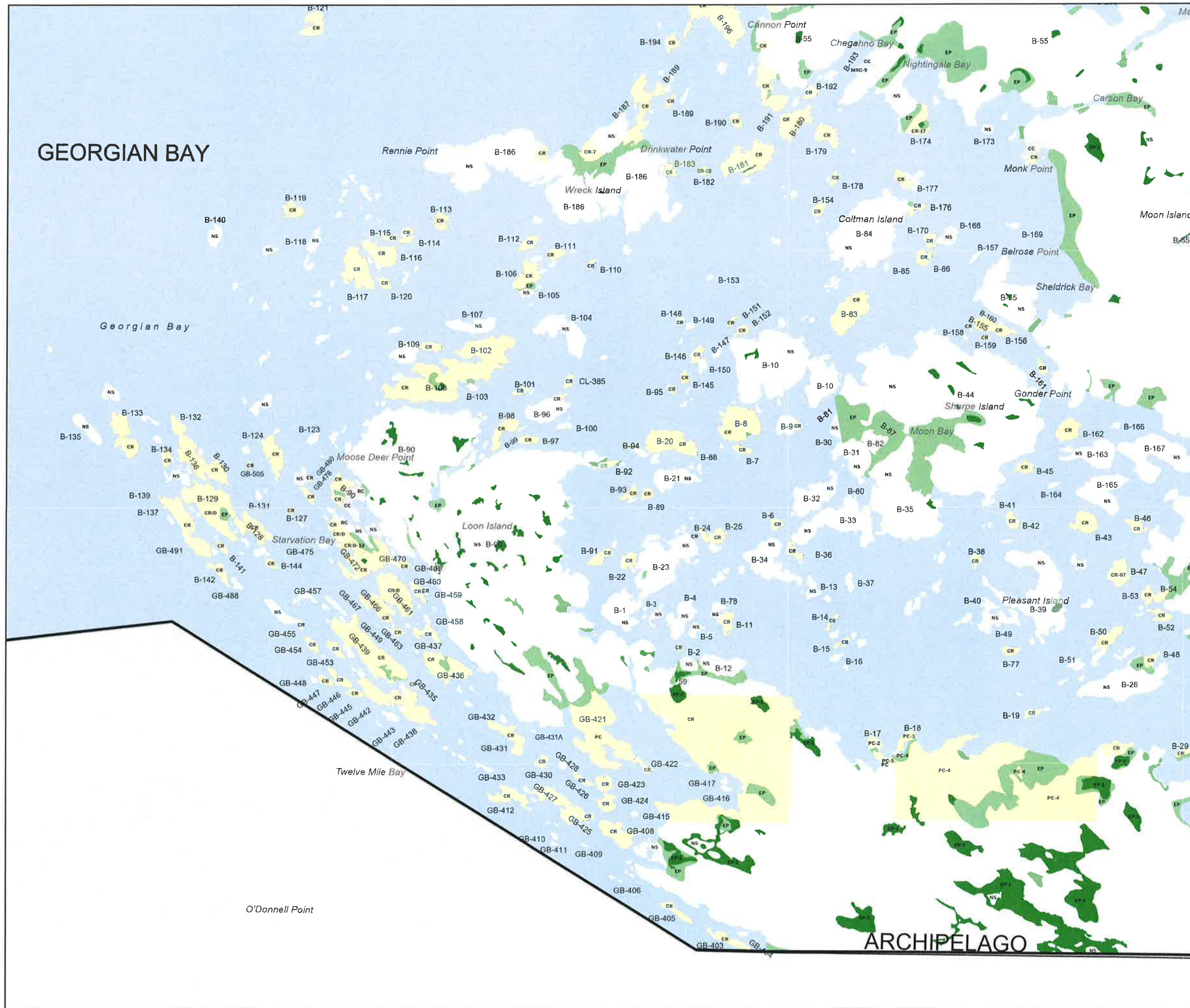
MAP INDEX South



Schedule '2' to BY-LAW No. A2224-26
READ and FINALLY PASSED in OPEN COUNCIL
This 22nd day of May, 2026.

Bert Liverance, Reeve
Bert Liverance, Reeve

Maryann Martin, Clerk
Maryann Martin, Clerk





THE CORPORATION
OF
THE TOWNSHIP OF
THE ARCHIPELAGO
9 James Street
Parry Sound, ON
P2A 1T4
705-746-4243

ZONING BY-LAW A2000-07
SCHEDULE A (South)
-- SHEET EXTRACT --

LEGEND

Zone Symbology

- NS, NSC
- Zone Specific - See Map for Zoning Label
 - CR - Coastal Residential
 - IR - Inland Lakes Residential
 - GR - General Residential
 - PBR - Pointe au Baril Residential
 - EU - Existing Use
 - PC - Private Club
 - CF - Community Facility
 - PQ - Pit & Quarry
 - WD - Waste Disposal
 - /D - Divided (Indicative of a lot division)
 - /H - Holding (Indicative of a holding provision)
 - # - Special Provision Zoning

Commercial Zoning

- CC - Contractor Commercial
- MC - Marina Commercial
- MRC - Marina/Resort Commercial
- RC - Resort Commercial
- EC - General Employment Commercial
- PBC - Pointe au Baril Commercial

- EP - Environmental Protection
- EP-1 - Environmental Protection One
- Deer Wintering Overlay (Stratum 1)

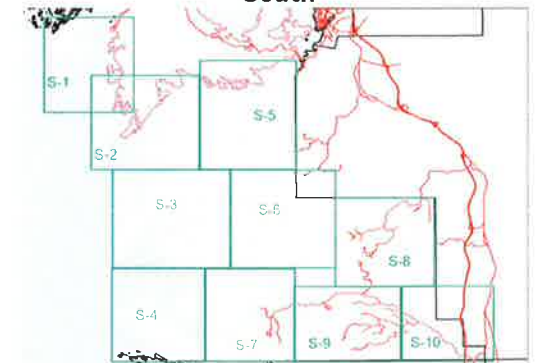
Other Objects

- Water
- Road
- Railway
- Island Number Reference
- Zoning Label Reference

0 500 1,000
Meters



MAP INDEX
South



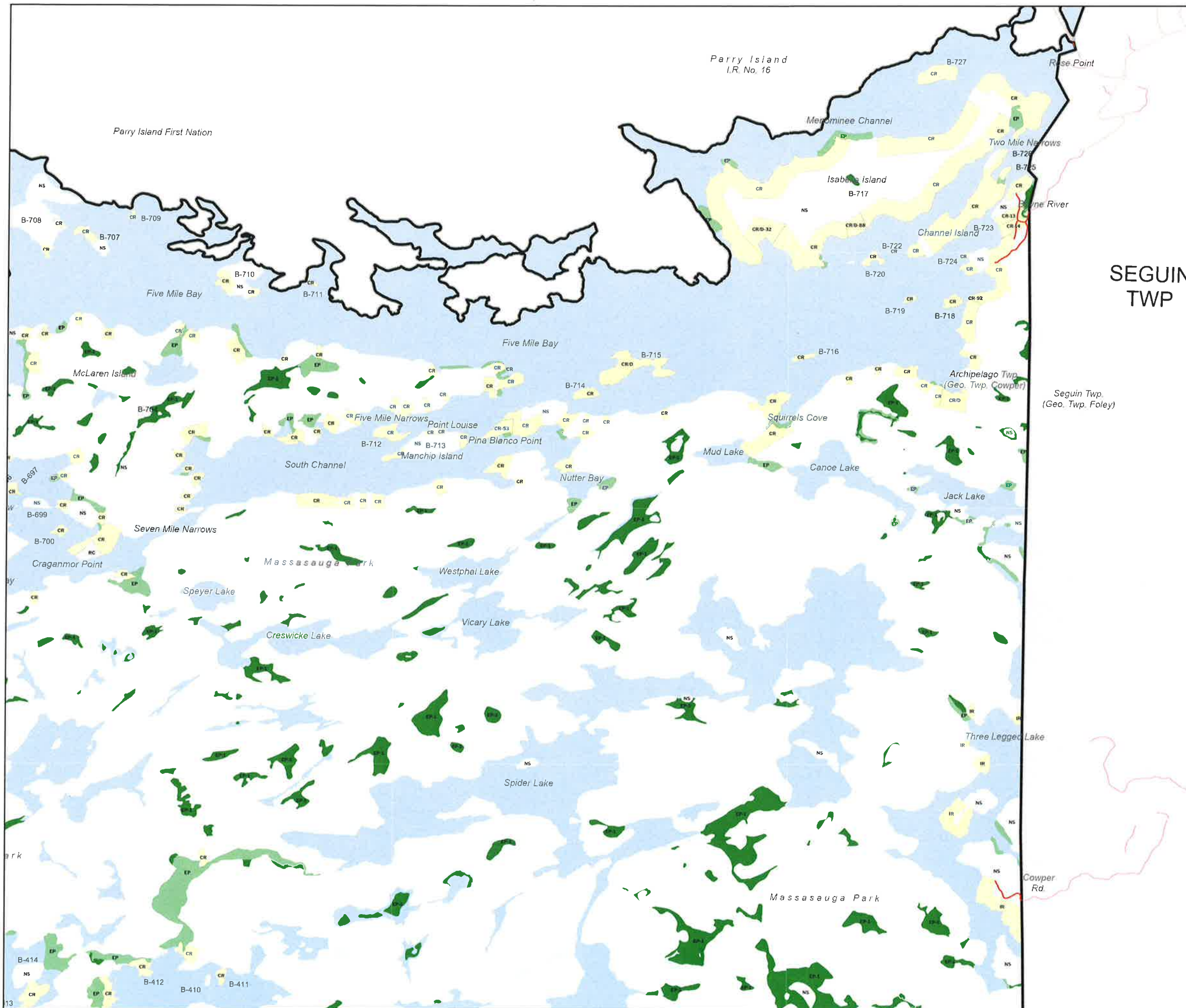
Schedule '2' to BY-LAW No. A2224-26
READ and FINALLY PASSED in OPEN COUNCIL
This 22nd day of May, 2026.

Bert Liverance
Bert Liverance, Reeve

Maryann Martin
Maryann Martin, Clerk

SHEET: S-5

Printed: 2026-05-14



SEGUIN
TWP

Seguin Twp.
(Geo. Twp. Foley)

Parry Island
I.R. No. 16

Merominee Channel

Rose Point

Two Mile Narrows

Isabella Island

Bayne River

Channel Island

Five Mile Bay

Five Mile Bay

McLaren Island

Five Mile Narrows

Point Louise

South Channel

Pina Blanco Point

Manchip Island

Nutter Bay

Mud Lake

Canoe Lake

Jack Lake

Seven Mile Narrows

Massasauga Park

Westphal Lake

Speyer Lake

Creswicke Lake

Vicary Lake

Spider Lake

Three Legged Lake

Massasauga Park

Cowper Rd.



THE CORPORATION
OF
THE TOWNSHIP OF
THE ARCHIPELAGO
9 James Street
Parry Sound, ON
P2A 1T4
705-746-4243

ZONING BY-LAW A2000-07
SCHEDULE A (South)
-- SHEET EXTRACT --

LEGEND

Zone Symbolology

- NS, NSC
- Zone Specific - See Map for Zoning Label
- CR - Coastal Residential
- IR - Inland Lakes Residential
- GR - General Residential
- PBR - Pointe au Baril Residential
- EU - Existing Use
- PC - Private Club
- CF - Community Facility
- PQ - Pit & Quarry
- WD - Waste Disposal
- /D - Divided (Indicative of a lot division)
- /H - Holding (Indicative of a holding provision)
- # - Special Provision Zoning

Commercial Zoning

- CC - Contractor Commercial
- MC - Marina Commercial
- MRC - Marina/Resort Commercial
- RC - Resort Commercial
- EC - General Employment Commercial
- PBC - Pointe au Baril Commercial

- EP - Environmental Protection
- EP-1 - Environmental Protection One
- Deer Wintering Overlay (Stratum 1)

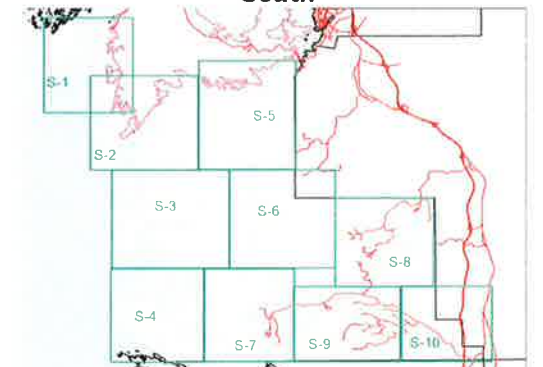
Other Objects

- Water
- Road
- Railway
- Island Number Reference
- Zoning Label Reference

0 500 1,000
Meters



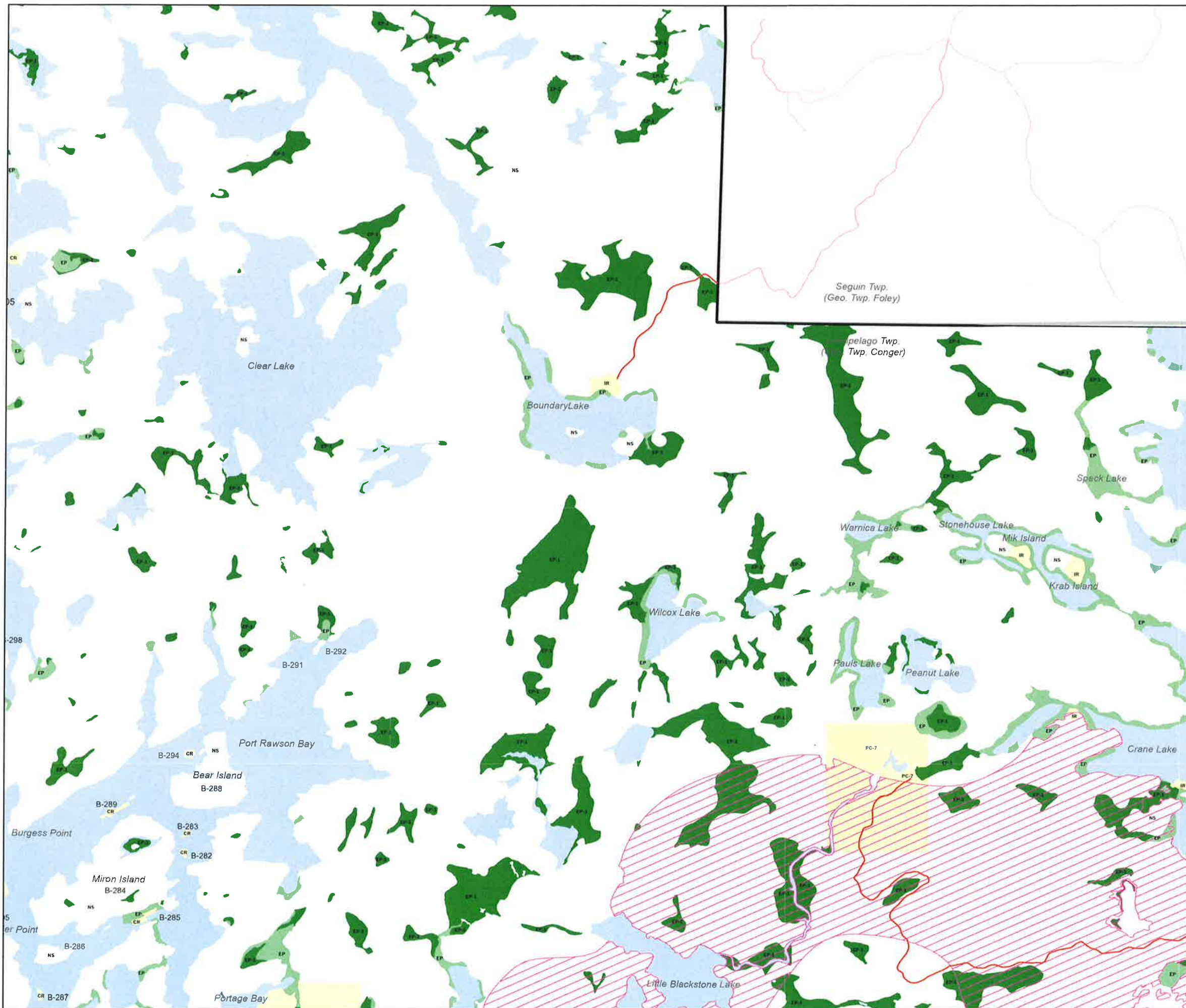
MAP INDEX
South



Schedule '2' to BY-LAW No. A2224-26
READ and FINALLY PASSED in OPEN COUNCIL
This 22nd day of May, 2026.

Bert Liverance
Bert Liverance, Reeve

Maryann Martin
Maryann Martin, Clerk





THE CORPORATION
OF
THE TOWNSHIP OF
THE ARCHIPELAGO
9 James Street
Parry Sound, ON
P2A 1T4
705-746-4243

ZONING BY-LAW A2000-07
SCHEDULE A (South)
-- SHEET EXTRACT --

LEGEND

Zone Symbology

- NS, NSC
- Zone Specific - See Map for Zoning Label
- CR - Coastal Residential
- IR - Inland Lakes Residential
- GR - General Lakes Residential
- PBR - Pointe au Baril Residential
- EU - Existing Use
- PC - Private Club
- CF - Community Facility
- PQ - Pit & Quarry
- WD - Waste Disposal
- /D - Divided (Indicative of a lot division)
- /H - Holding (Indicative of a holding provision)
- # - Special Provision Zoning

Commercial Zoning

- CC - Contractor Commercial
- MC - Marina Commercial
- MRC - Marina/Resort Commercial
- RC - Resort Commercial
- EC - General Employment Commercial
- PBC - Pointe au Baril Commercial

- EP - Environmental Protection
- EP-1 - Environmental Protection One
- Deer Wintering Overlay (Stratum 1)

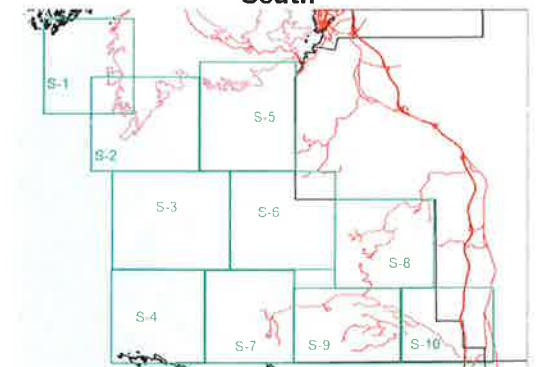
Other Objects

- Water
- Road
- Railway
- Island Number Reference
- Zoning Label Reference

0 500 1,000
Meters



MAP INDEX
South

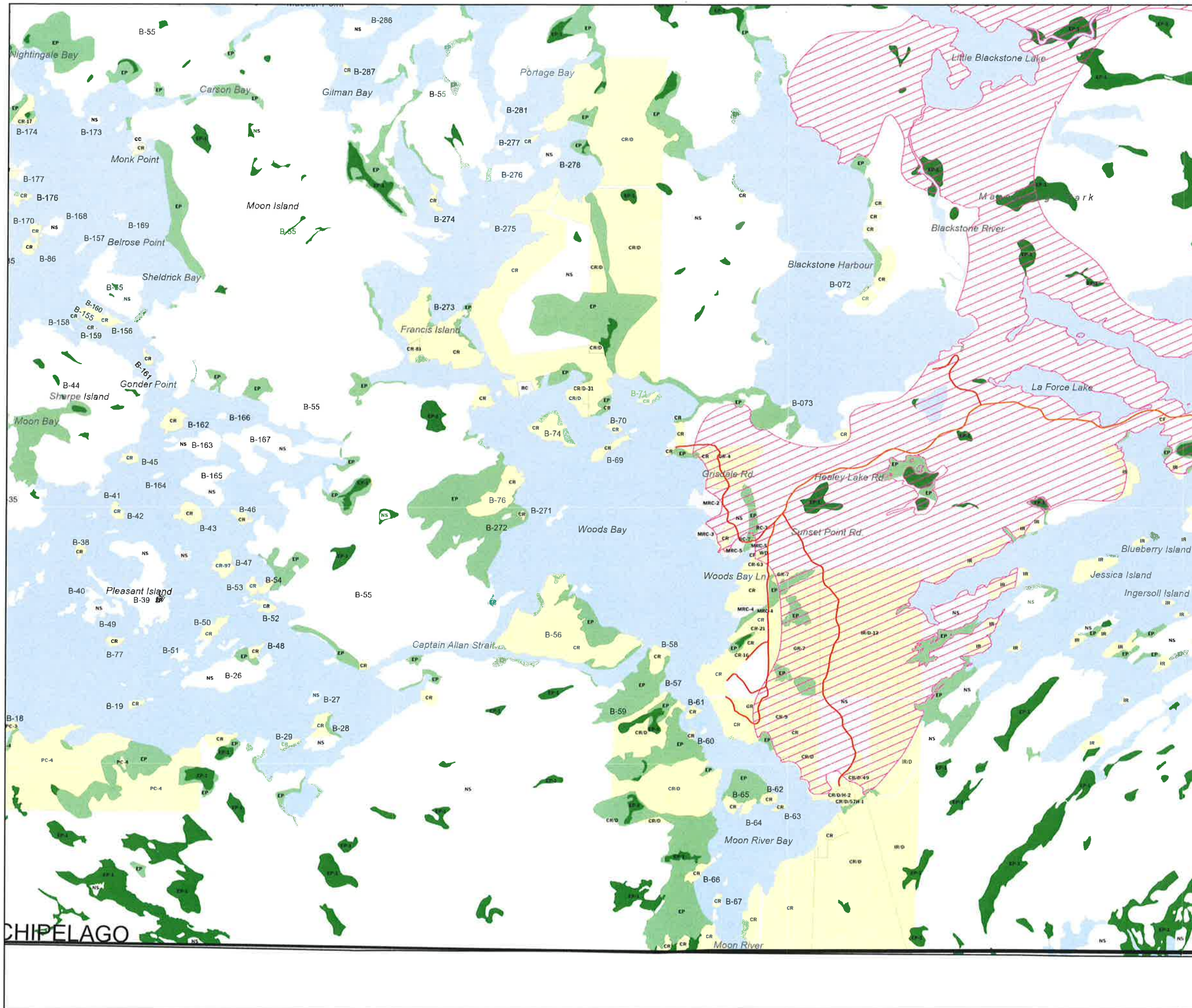


Schedule '2' to BY-LAW No. A2224-26
READ and FINALLY PASSED in OPEN COUNCIL
This 22nd day of May, 2026.

Bert Liverance
Bert Liverance, Reeve

Maryann Martin
Maryann Martin, Clerk

SHEET: S-7



CHIPPELAGO



THE CORPORATION
OF
THE TOWNSHIP OF
THE ARCHIPELAGO
9 James Street
Parry Sound, ON
P2A 1T4
705-746-4243

ZONING BY-LAW A2000-07
SCHEDULE A (South)
-- SHEET EXTRACT --

LEGEND

Zone Symbology

- NS, NSC
- Zone Specific - See Map for Zoning Label
- CR - Coastal Residential
- IR - Inland Lakes Residential
- GR - General Lakes Residential
- PBR - Pointe au Baril Residential
- EU - Existing Use
- PC - Private Club
- CF - Community Facility
- PQ - Pit & Quarry
- WD - Waste Disposal
- /D - Divided (Indicative of a lot division)
- /H - Holding (Indicative of a holding provision)
- # - Special Provision Zoning
- Commercial Zoning
- CC - Contractor Commercial
- MC - Marina Commercial
- MRC - Marina/Resort Commercial
- RC - Resort Commercial
- EC - General Employment Commercial
- PBC - Pointe au Baril Commercial

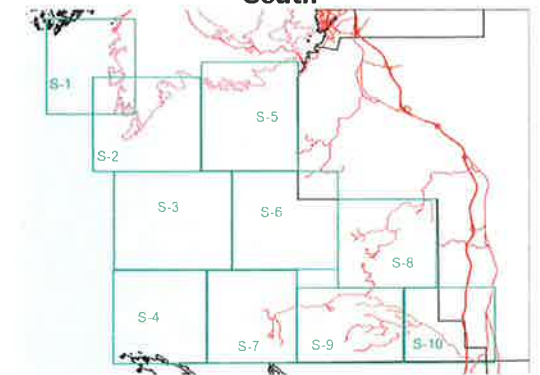
- EP - Environmental Protection
- EP-1 - Environmental Protection One
- Deer Wintering Overlay (Stratum 1)

Other Objects

- Water
- Road
- Railway
- Island Number Reference
- Zoning Label Reference



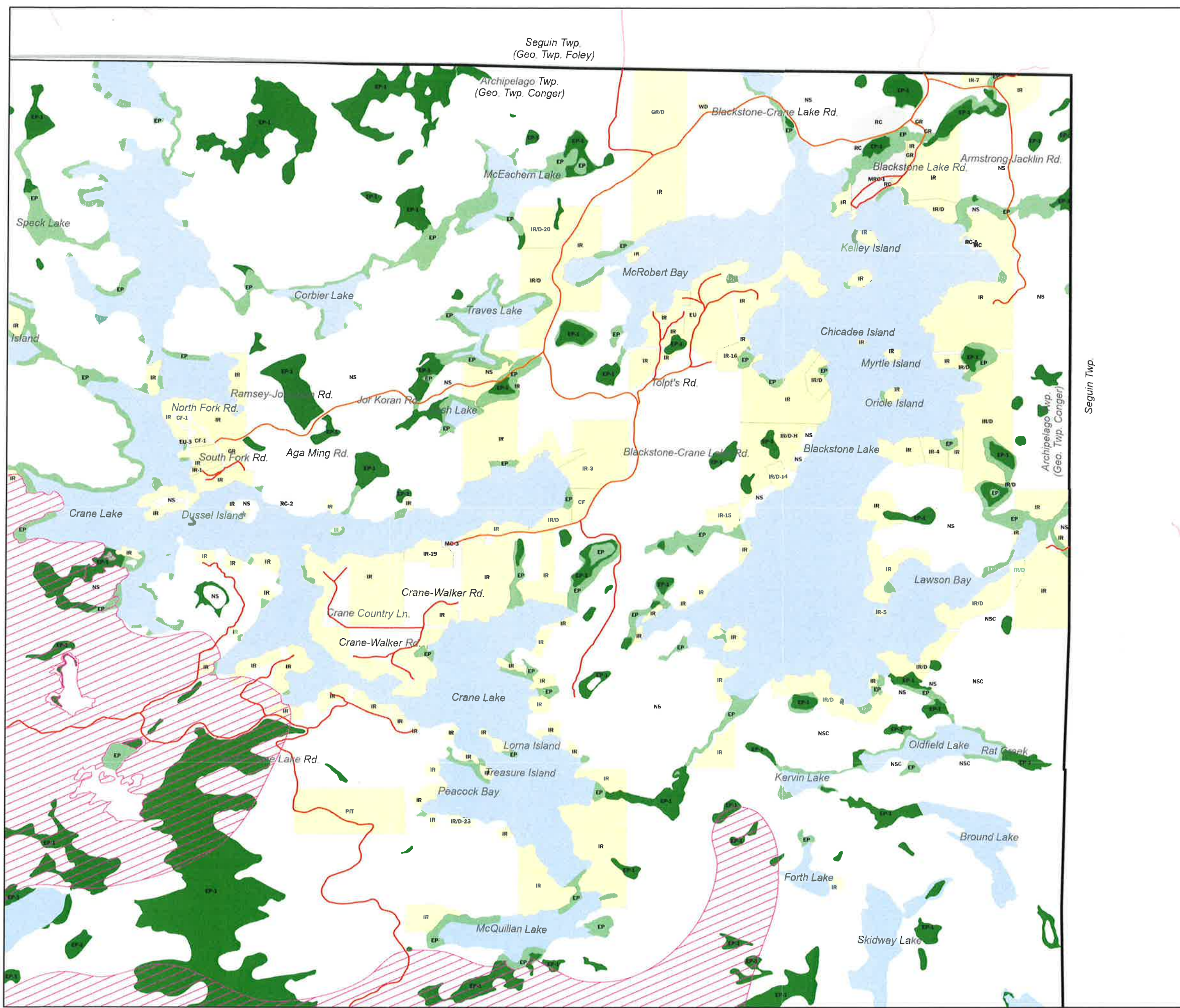
MAP INDEX
South



Schedule '2' to BY-LAW No. A2224-26
READ and FINALLY PASSED in OPEN COUNCIL
This 22nd day of May, 2026.

Bert Liverance
Bert Liverance, Reeve

Maryann Martin
Maryann Martin, Clerk





THE CORPORATION
OF
THE TOWNSHIP OF
THE ARCHIPELAGO
9 James Street
Parry Sound, ON
P2A 1T4
705-746-4243

ZONING BY-LAW A2000-07
SCHEDULE A (South)
-- SHEET EXTRACT --

LEGEND

Zone Symbology

- NS, NSC
- Zone Specific - See Map for Zoning Label
- CR - Coastal Residential
- IR - Inland Lakes Residential
- GR - General Residential
- PBR - Pointe au Baril Residential
- EU - Existing Use
- PC - Private Club
- CF - Community Facility
- PQ - Pit & Quarry
- WD - Waste Disposal
- /D - Divided (Indicative of a lot division)
- /H - Holding (Indicative of a holding provision)
- # - Special Provision Zoning

Commercial Zoning

- CC - Contractor Commercial
- MC - Marina Commercial
- MRC - Marina/Resort Commercial
- RC - Resort Commercial
- EC - General Employment Commercial
- PBC - Pointe au Baril Commercial

- EP - Environmental Protection
- EP-1 - Environmental Protection One
- Deer Wintering Overlay (Stratum 1)

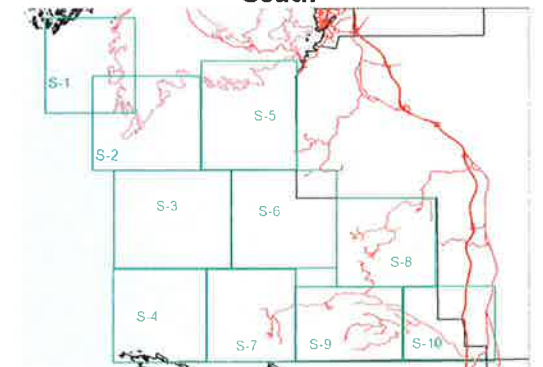
Other Objects

- Water
- Road
- Railway
- Island Number Reference
- Zoning Label Reference

0 500 1,000
Meters



MAP INDEX
South



Schedule '2' to BY-LAW No. A2224-26
READ and FINALLY PASSED in OPEN COUNCIL
This 22nd day of May, 2026.

Bert Liverance
Bert Liverance, Reeve

Maryann Martin
Maryann Martin, Clerk



THE CORPORATION
OF
THE TOWNSHIP OF
THE ARCHIPELAGO
9 James Street
Parry Sound, ON
P2A 1T4
705-746-4243

ZONING BY-LAW A2000-07
SCHEDULE A (South)
-- SHEET EXTRACT --

LEGEND

Zone Symbology

- NS, NSC
- Zone Specific - See Map for Zoning Label
- CR - Coastal Residential
- IR - Inland Lakes Residential
- GR - General Residential
- PBR - Pointe au Baril Residential
- EU - Existing Use
- PC - Private Club
- CF - Community Facility
- PQ - Pit & Quarry
- WD - Waste Disposal
- /D - Divided (Indicative of a lot division)
- /H - Holding (Indicative of a holding provision)
- # - Special Provision Zoning
- Commercial Zoning
- CC - Contractor Commercial
- MC - Marina Commercial
- MRC - Marina/Resort Commercial
- RC - Resort Commercial
- EC - General Employment Commercial
- PBC - Pointe au Baril Commercial

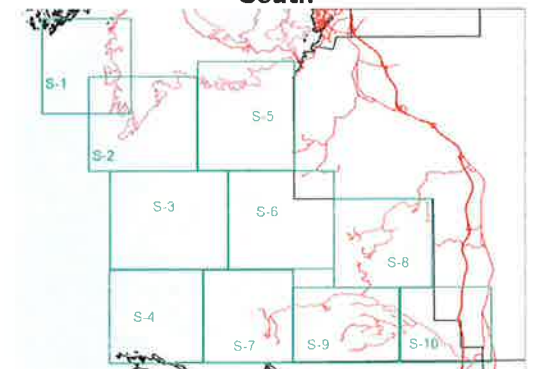
- EP - Environmental Protection
- EP-1 - Environmental Protection One
- Deer Wintering Overlay (Stratum 1)

Other Objects

- Water
- Road
- Railway
- Island Number Reference
- Zoning Label Reference



MAP INDEX
South



Schedule '2' to BY-LAW No. A2224-26
READ and FINALLY PASSED in OPEN COUNCIL
This 22nd day of May, 2026.

Bert Liverance
Bert Liverance, Reeve

Maryann Martin
Maryann Martin, Clerk

